

# MORGAN AND MORECAMBE OFFSHORE WIND FARMS: TRANSMISSION ASSETS

## Street Works Plan- Part 1 of 2

8 August 2025  
Rev: F02

MOR001-FLO-CON-ENV-PLN-0035  
MRCNS-J3303-JVW-10015

PINS Reference: EN020028  
APFP Regulations: 5(2)(k)  
Document reference: B12/F02

Document status					
Version	Purpose of document	Approved by	Date	Approved by	Date
F01	For issue	AS	September 2024	IM	September 2024
F02	Deadline 4	HK	August 2025	IM	August 2025

---

**Prepared by:**

**Morgan Offshore Wind Project Limited,  
Morecambe Offshore Windfarm Ltd**

**Prepared for:**

**Morgan Offshore Wind Project Limited,  
Morecambe Offshore Windfarm Ltd**

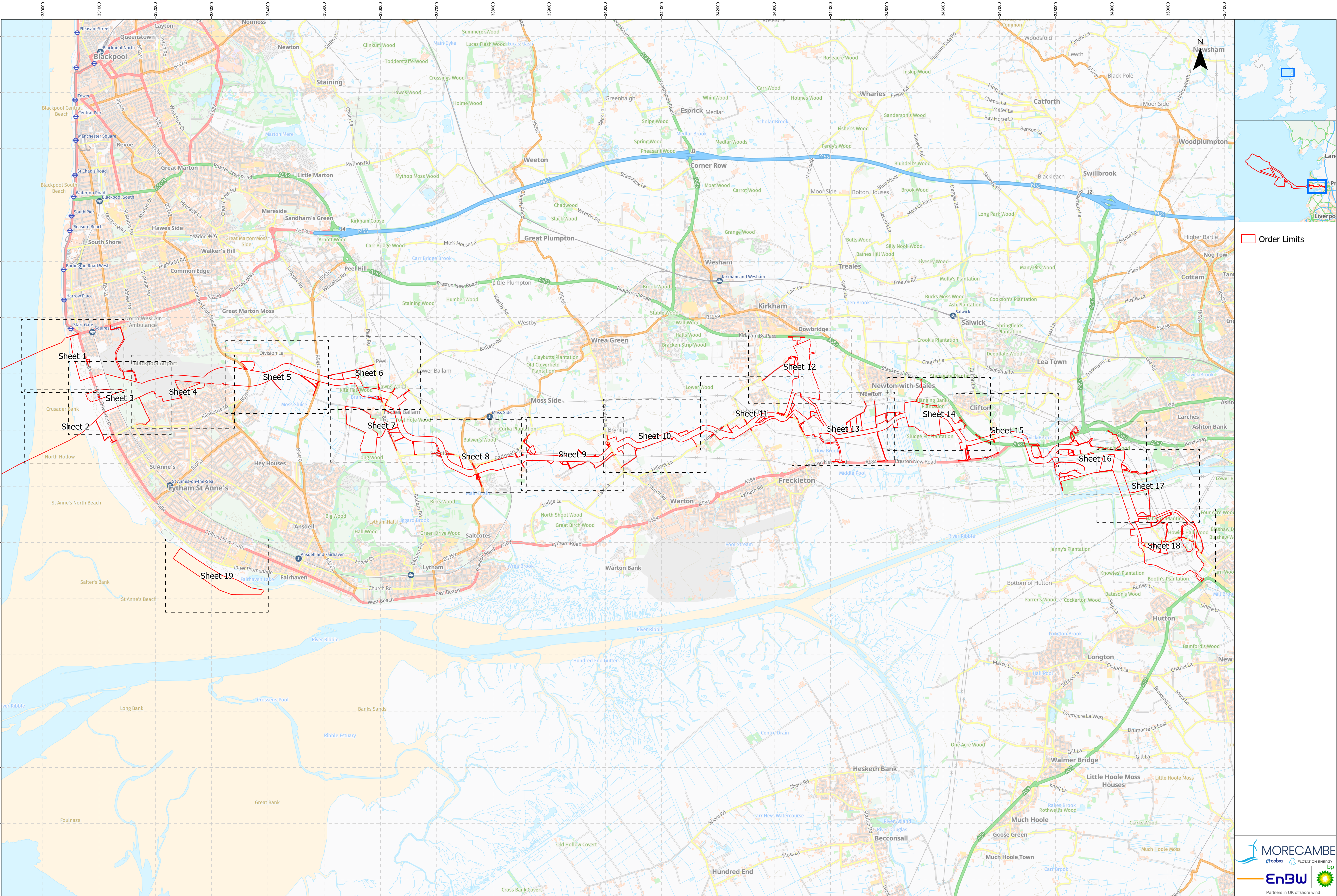
---



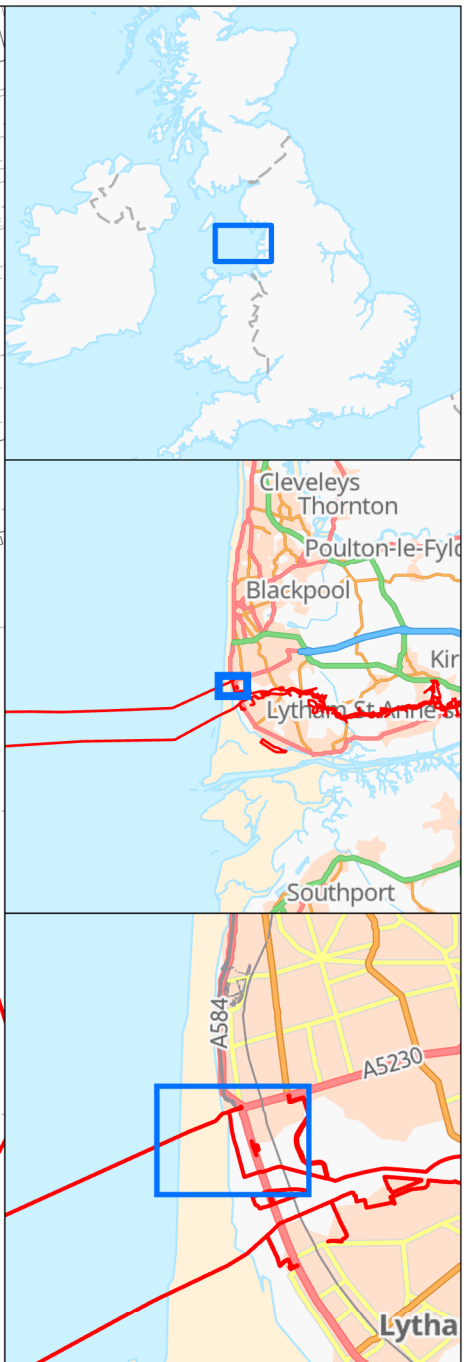
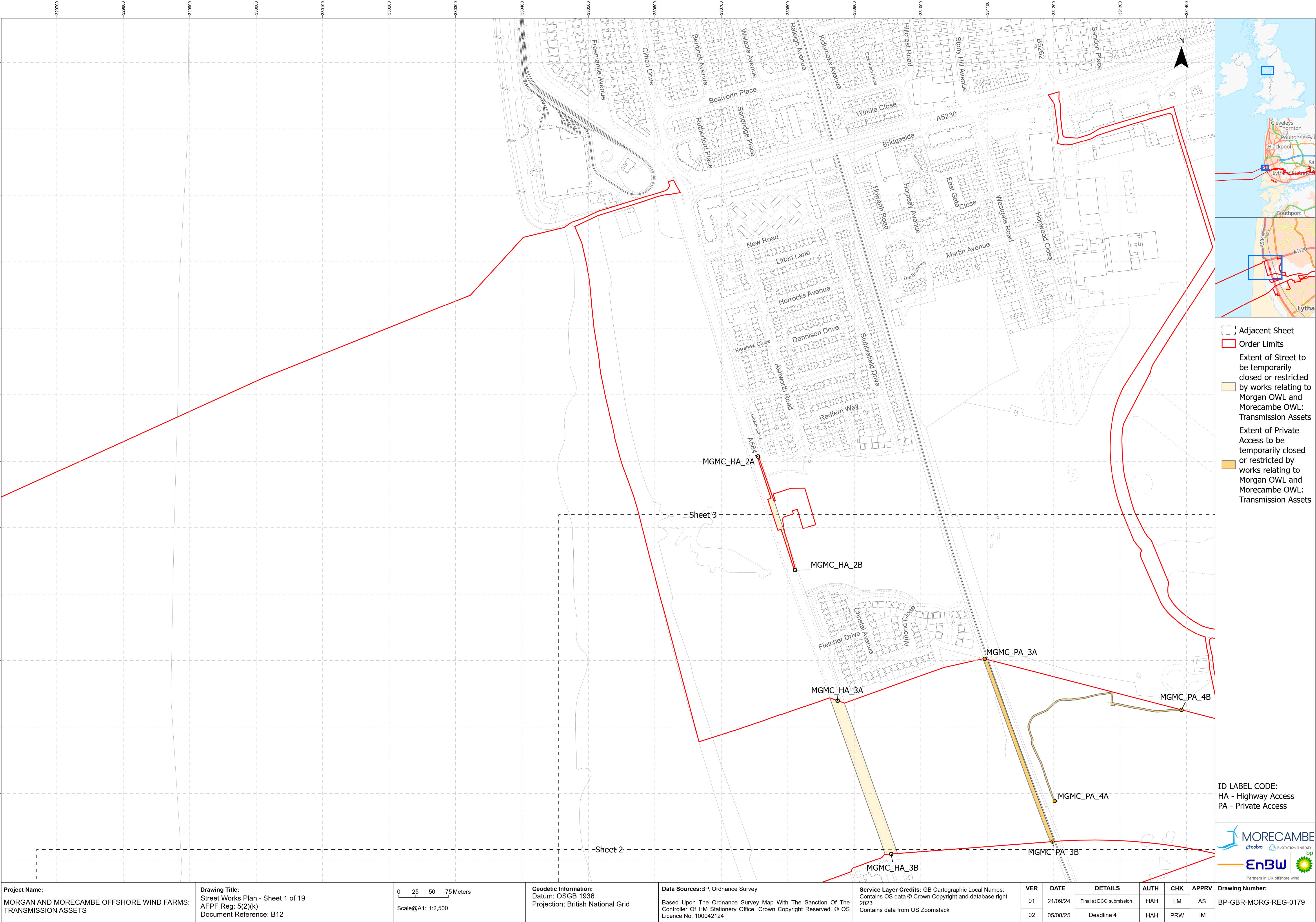
## Schedule of Changes

Sheet Number	Change requested by	Change Made	Reason for Change	Revision	Submission deadline
1	Blackpool Borough Council	Removal of extents on Squires Gate Lane between points MGMC_HA_1A and MGMC_HA_1B; Private Access between points MGMC_PA_1A and MGMC_PA_1B; and on Squires Gate Lane between points MGMC_HA_35A and MGMC_HA_.	To address points raised in discussion with Blackpool Borough Council via the Statement of Common Ground process to remove powers within the draft Development Consent Order (document reference C1) associated with Starr Gate and the access into Blackpool Airport via Squires Gate Lane.	F02	Deadline 4









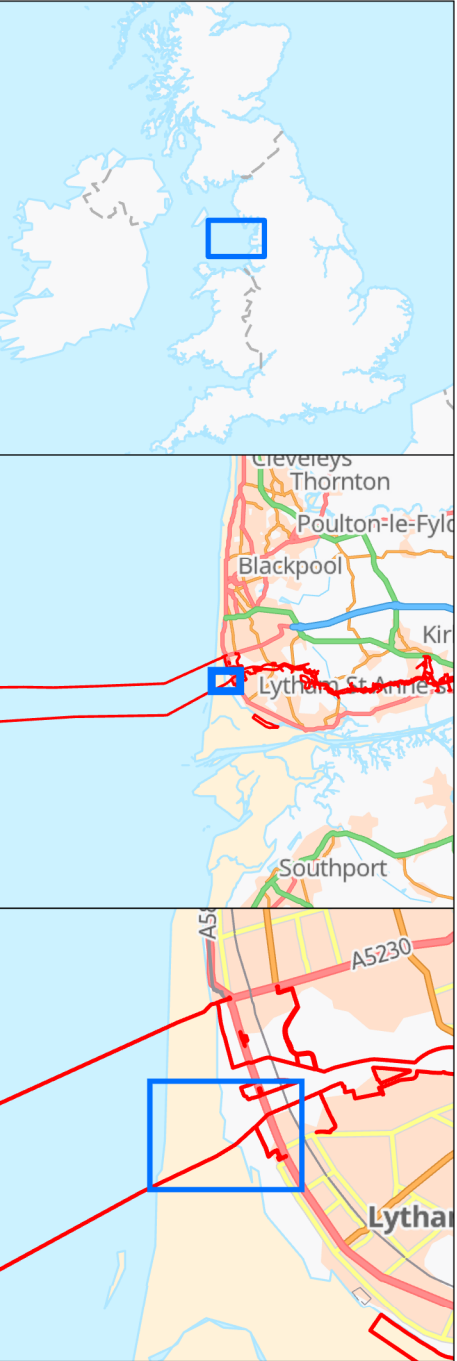
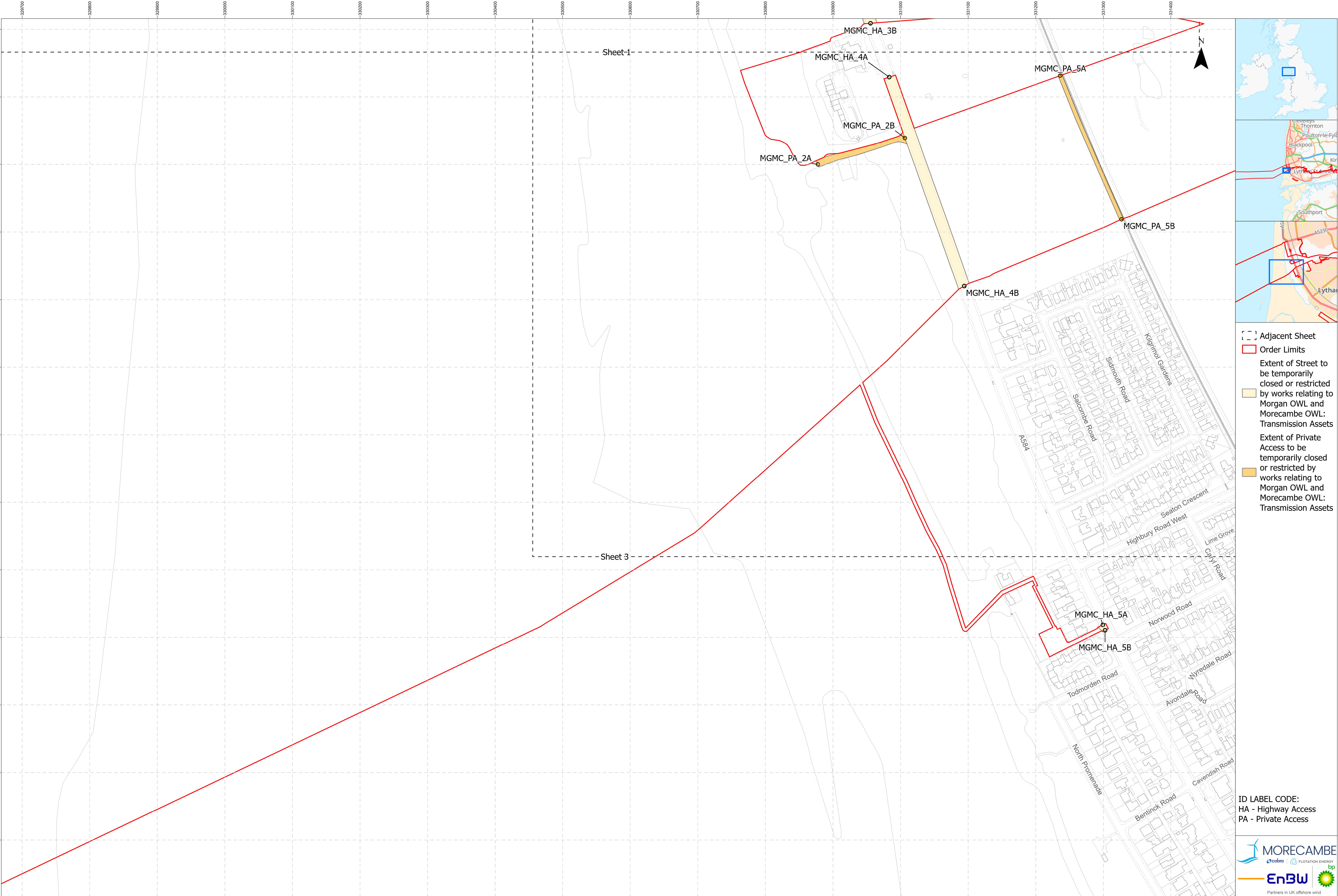
- [ ] Adjacent Sheet
- [ ] Order Limits
- Extent of Street to be temporarily closed or restricted by works relating to Morgan OWL and Morecambe OWL: Transmission Assets
- Extent of Private Access to be temporarily closed or restricted by works relating to Morgan OWL and Morecambe OWL: Transmission Assets

ID LABEL CODE:  
HA - Highway Access  
PA - Private Access



Project Name: MORGAN AND MORECAMBE OFFSHORE WIND FARMS: TRANSMISSION ASSETS	Drawing Title: Street Works Plan - Sheet 1 of 19 AFPF Reg: 5(2)(k) Document Reference: B12	Geodetic Information: Datum: OSGB 1936 Projection: British National Grid	Data Sources:BP, Ordnance Survey Based Upon The Ordnance Survey Map With The Sanction Of The Controller Of HM Stationery Office. Crown Copyright Reserved. © OS Licence No. 100042124	Service Layer Credits: GB Cartographic Local Names: Contains OS data © Crown Copyright and database right 2023 Contains data from OS Zoomstack	VER	DATE	DETAILS	AUTH	CHK	APPRV	Drawing Number: BP-GBR-MORG-REG-0179
					01	21/09/24	Final at DCO submission	HAH	LM	AS	
					02	05/08/25	Deadline 4	HAH	PRW	IM	





- Adjacent Sheet
- Order Limits
- Extent of Street to be temporarily closed or restricted by works relating to Morgan OWL and Morecambe OWL: Transmission Assets
- Extent of Private Access to be temporarily closed or restricted by works relating to Morgan OWL and Morecambe OWL: Transmission Assets

ID LABEL CODE:  
HA - Highway Access  
PA - Private Access



**Project Name:**  
MORGAN AND MORECAMBE OFFSHORE WIND FARMS:  
TRANSMISSION ASSETS

**Drawing Title:**  
Street Works Plan - Sheet 2 of 19  
AFPF Reg: 5(2)(k)  
Document Reference: B12

0 25 50 75 Meters  
Scale@A1: 1:2,500

**Geodetic Information:**  
Datum: OSGB 1936  
Projection: British National Grid

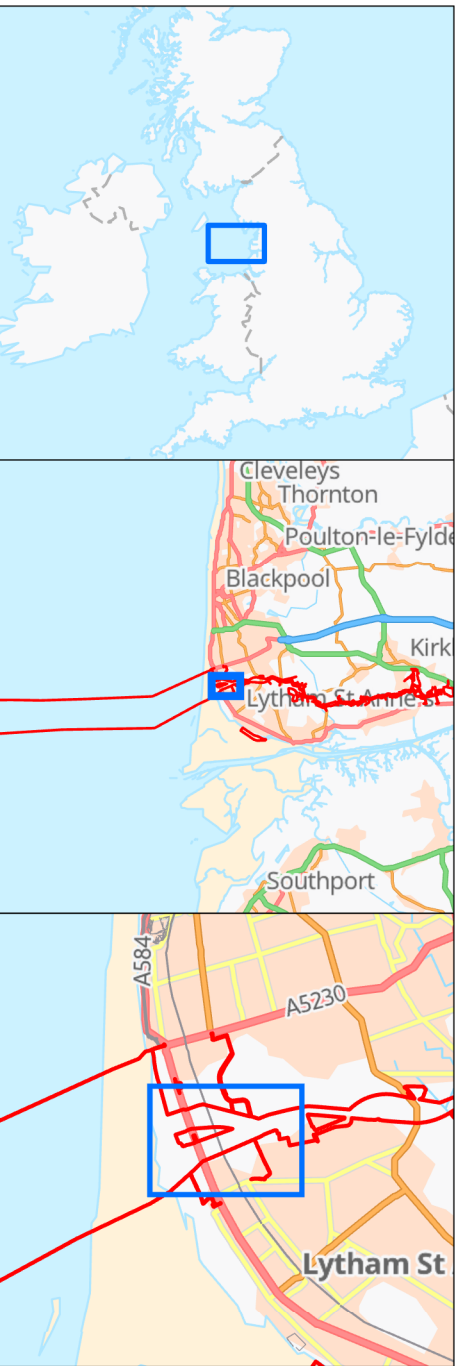
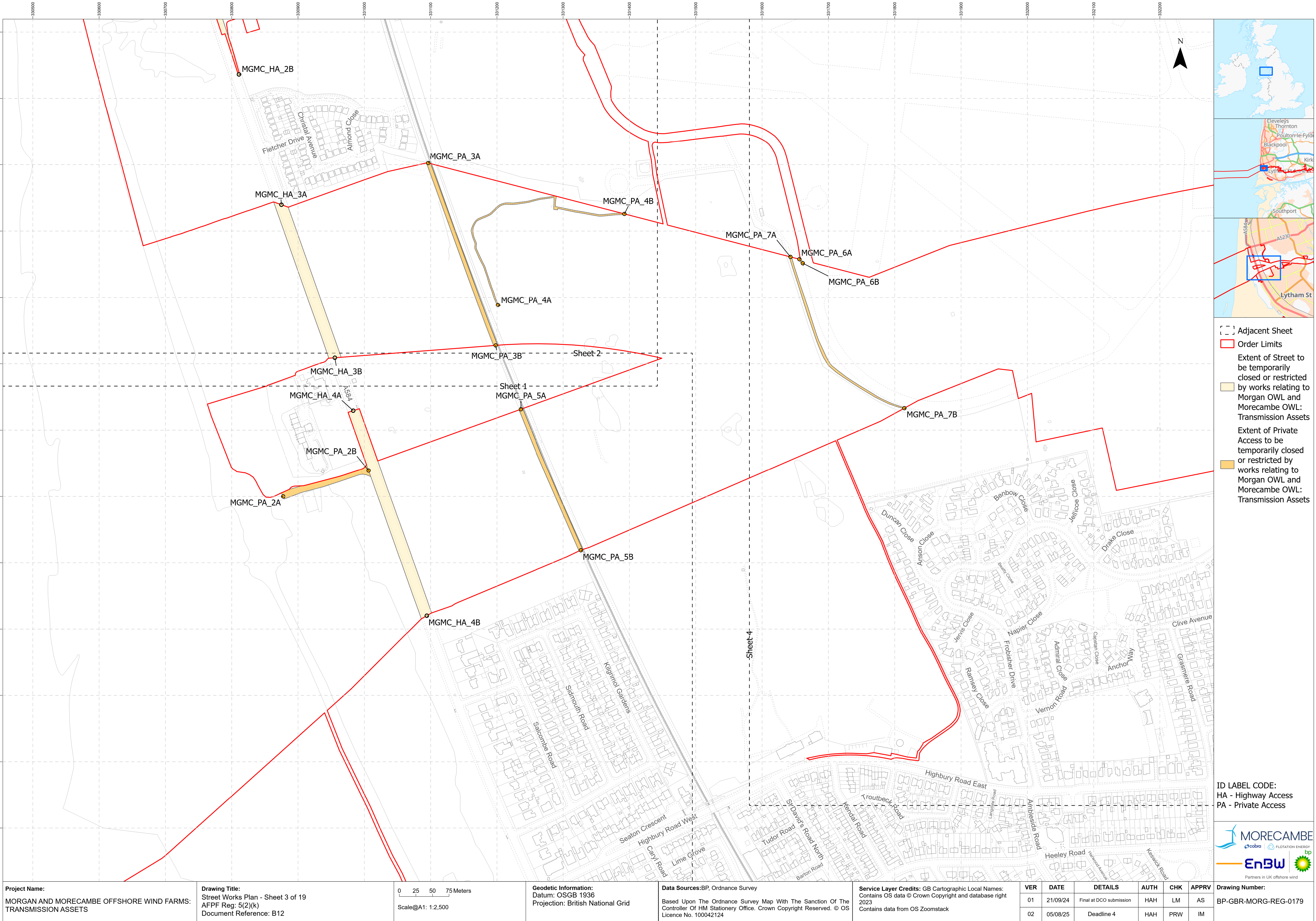
**Data Sources:**BP, Ordnance Survey  
Based Upon The Ordnance Survey Map With The Sanction Of The  
Controller Of HM Stationery Office. Crown Copyright Reserved. © OS  
Licence No. 100042124

**Service Layer Credits:** GB Cartographic Local Names:  
Contains OS data © Crown Copyright and database right  
2023  
Contains data from OS Zoomstack

VER	DATE	DETAILS	AUTH	CHK	APPRV
01	21/09/24	Final at DCO submission	HAH	LM	AS
02	05/08/25	Deadline 4	HAH	PRW	IM

**Drawing Number:**  
BP-GBR-MORG-REG-0179





- [ ] Adjacent Sheet
- [ ] Order Limits
- Extent of Street to be temporarily closed or restricted by works relating to Morgan OWL and Morecambe OWL: Transmission Assets
- Extent of Private Access to be temporarily closed or restricted by works relating to Morgan OWL and Morecambe OWL: Transmission Assets

ID LABEL CODE:  
HA - Highway Access  
PA - Private Access



**Project Name:**  
MORGAN AND MORECAMBE OFFSHORE WIND FARMS:  
TRANSMISSION ASSETS

**Drawing Title:**  
Street Works Plan - Sheet 3 of 19  
AFPF Reg: 5(2)(k)  
Document Reference: B12

0 25 50 75 Meters  
Scale@A1: 1:2,500

**Geodetic Information:**  
Datum: OSGB 1936  
Projection: British National Grid

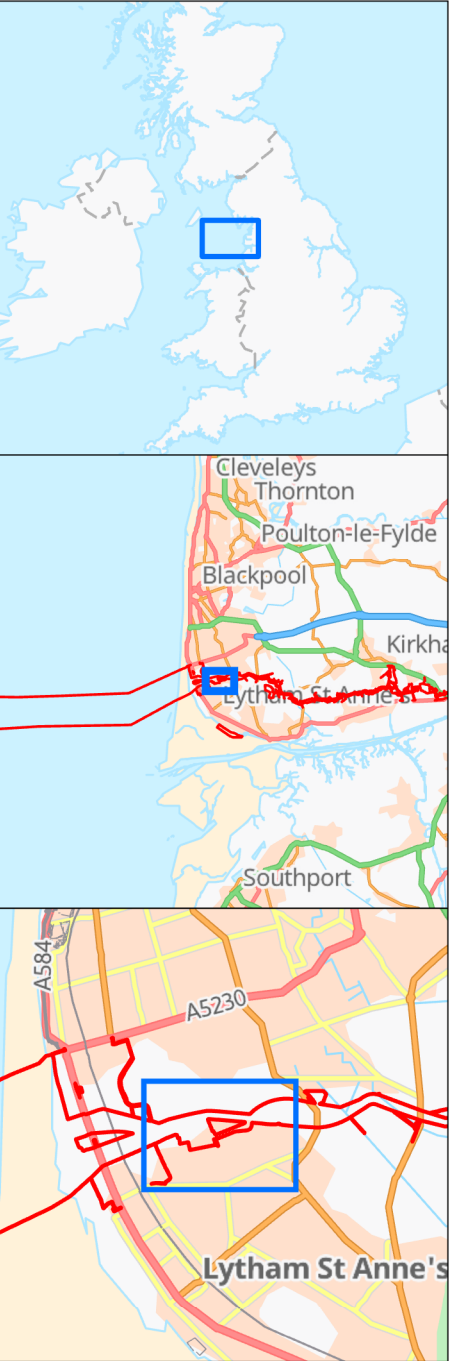
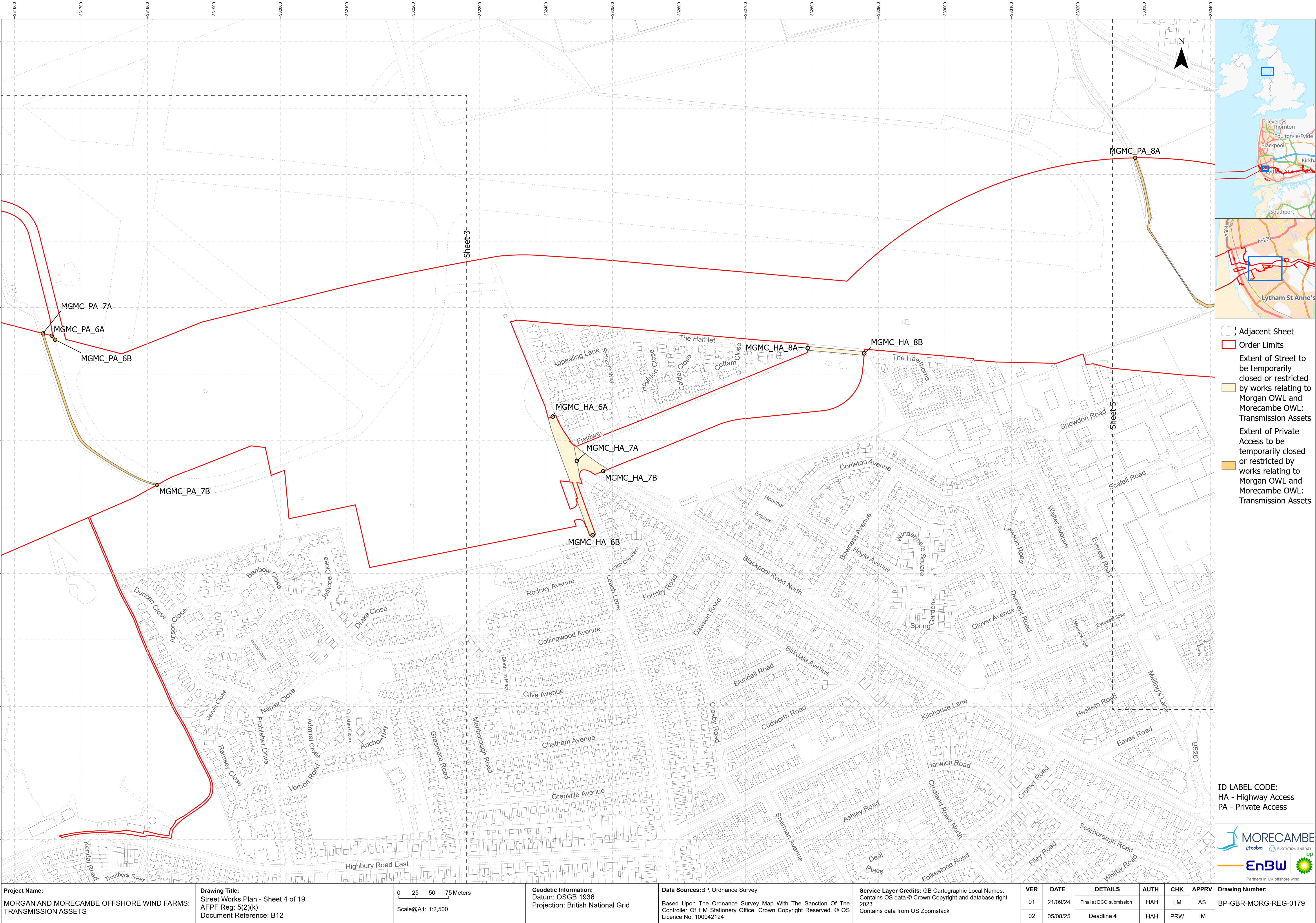
**Data Sources:**BP, Ordnance Survey  
Based Upon The Ordnance Survey Map With The Sanction Of The  
Controller Of HM Stationery Office. Crown Copyright Reserved. © OS  
Licence No. 100042124

**Service Layer Credits:** GB Cartographic Local Names:  
Contains OS data © Crown Copyright and database right  
2023  
Contains data from OS Zoomstack

VER	DATE	DETAILS	AUTH	CHK	APPRV
01	21/09/24	Final at DCO submission	HAH	LM	AS
02	05/08/25	Deadline 4	HAH	PRW	IM

**Drawing Number:**  
BP-GBR-MORG-REG-0179





- [ ] Adjacent Sheet
- [ ] Order Limits
- Extent of Street to be temporarily closed or restricted by works relating to Morgan OWL and Morecambe OWL: Transmission Assets
- Extent of Private Access to be temporarily closed or restricted by works relating to Morgan OWL and Morecambe OWL: Transmission Assets

ID LABEL CODE:  
HA - Highway Access  
PA - Private Access

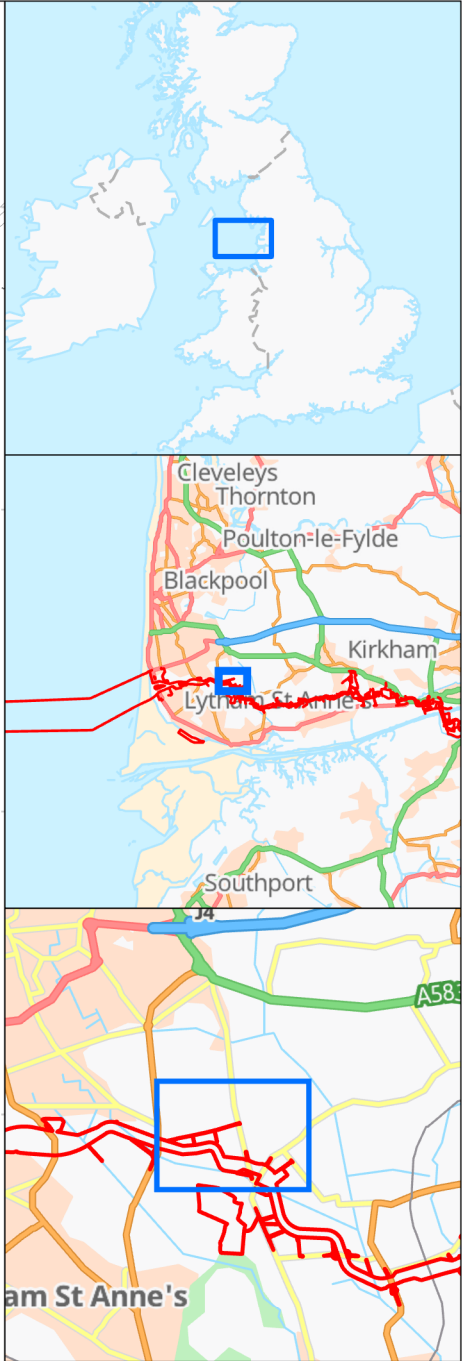
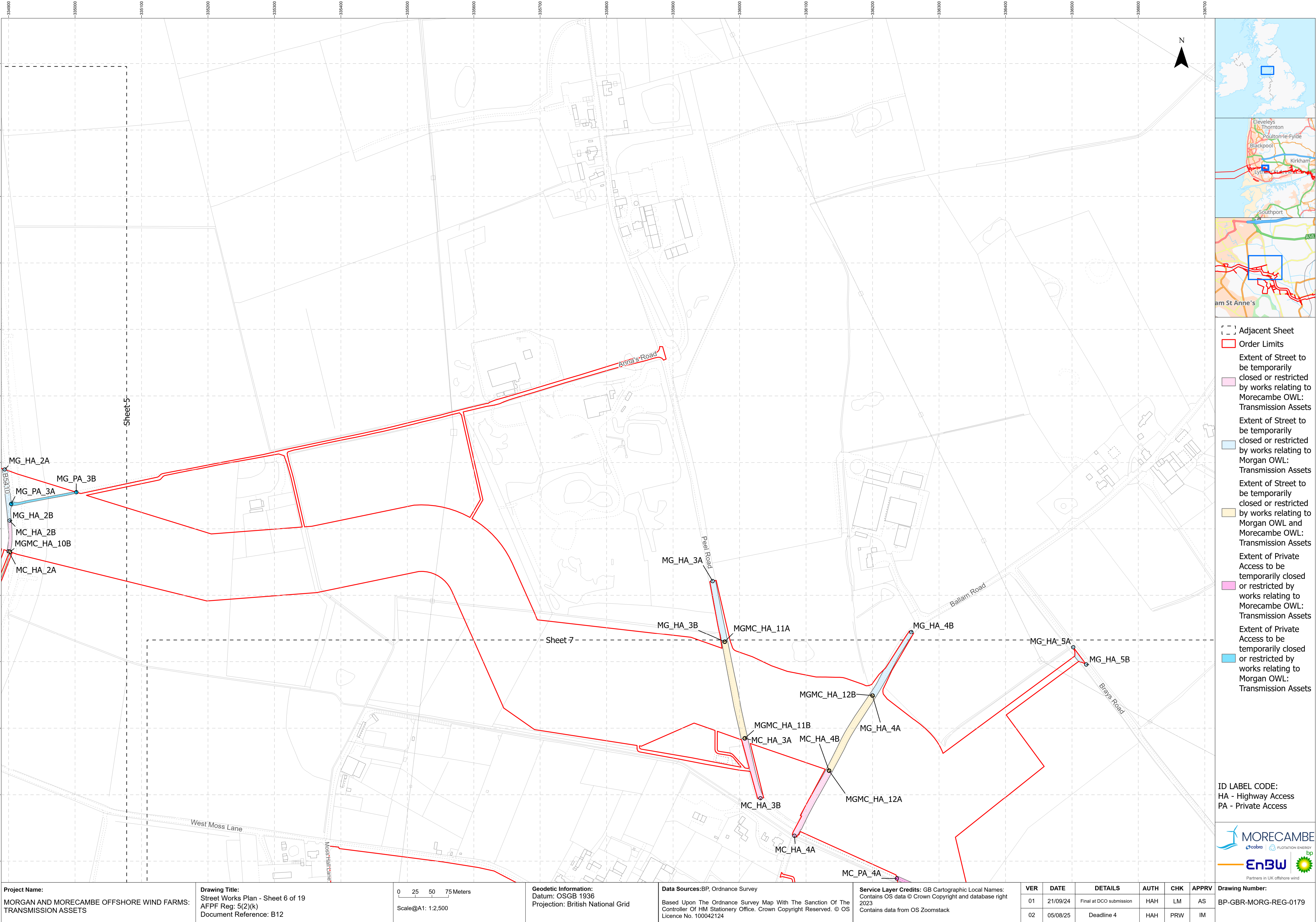


<div>Project Name:</div> <div>MORGAN AND MORECAMBE OFFSHORE WIND FARMS: TRANSMISSION ASSETS</div>	<div>Drawing Title:</div> <div>Street Works Plan - Sheet 4 of 19</div> <div>AFPF Reg: 5(2)(k)</div> <div>Document Reference: B12</div>	<div><div><div>0255075</div><div>Meters</div></div><div>Scale@A1: 1:2,500</div></div>	<div>Geodetic Information:</div> <div>Datum: OSGB 1936</div> <div>Projection: British National Grid</div>	<div>Data Sources:BP, Ordnance Survey</div> <div>Based Upon The Ordnance Survey Map With The Sanction Of The Controller Of HM Stationery Office. Crown Copyright Reserved. © OS Licence No. 100042124</div>	<div>Service Layer Credits: GB Cartographic Local Names: Contains OS data © Crown Copyright and database right 2023</div> <div>Contains data from OS Zoomstack</div>	<div>VER</div> <div>01</div>	<div>DATE</div> <div>21/09/24</div>	<div>DETAILS</div> <div>Final at DCO submission</div>	<div>AUTH</div> <div>HAH</div>	<div>CHK</div> <div>LM</div>	<div>APPRV</div> <div>AS</div>	<div>Drawing Number:</div> <div>BP-GBR-MORG-REG-0179</div>
						<div>02</div>	<div>05/08/25</div>	<div>Deadline 4</div>	<div>HAH</div>	<div>PRW</div>	<div>IM</div>	









- [ ] Adjacent Sheet
- [ ] Order Limits
- Extent of Street to be temporarily closed or restricted by works relating to Morecambe OWL: Transmission Assets
- Extent of Street to be temporarily closed or restricted by works relating to Morgan OWL: Transmission Assets
- Extent of Street to be temporarily closed or restricted by works relating to Morgan OWL and Morecambe OWL: Transmission Assets
- Extent of Private Access to be temporarily closed or restricted by works relating to Morecambe OWL: Transmission Assets
- Extent of Private Access to be temporarily closed or restricted by works relating to Morgan OWL: Transmission Assets

ID LABEL CODE:  
HA - Highway Access  
PA - Private Access



**Project Name:**  
MORGAN AND MORECAMBE OFFSHORE WIND FARMS:  
TRANSMISSION ASSETS

**Drawing Title:**  
Street Works Plan - Sheet 6 of 19  
AFPF Reg: 5(2)(k)  
Document Reference: B12

0 25 50 75 Meters  
Scale@A1: 1:2,500

**Geodetic Information:**  
Datum: OSGB 1936  
Projection: British National Grid

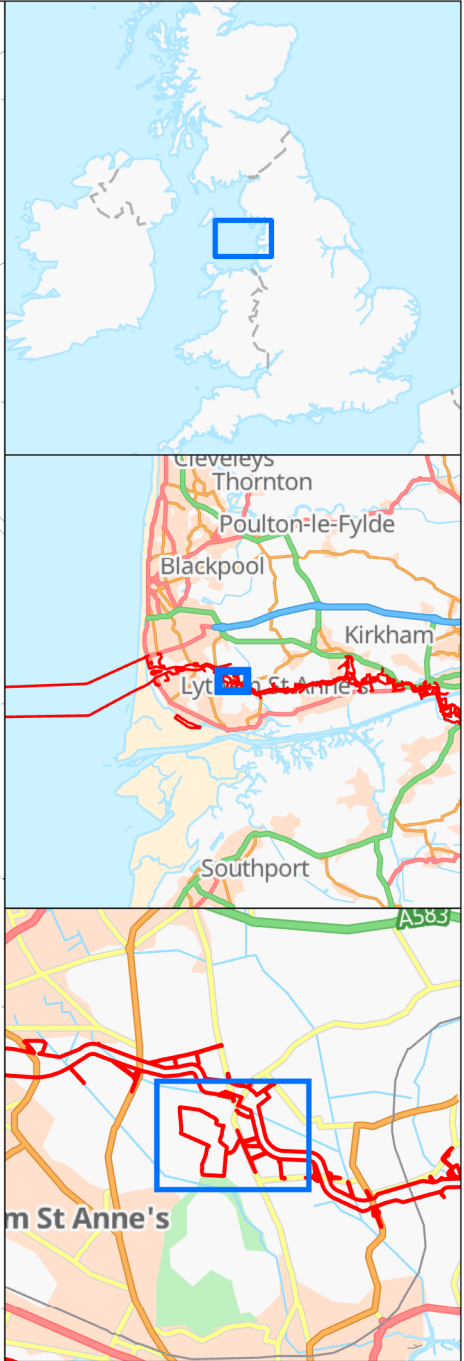
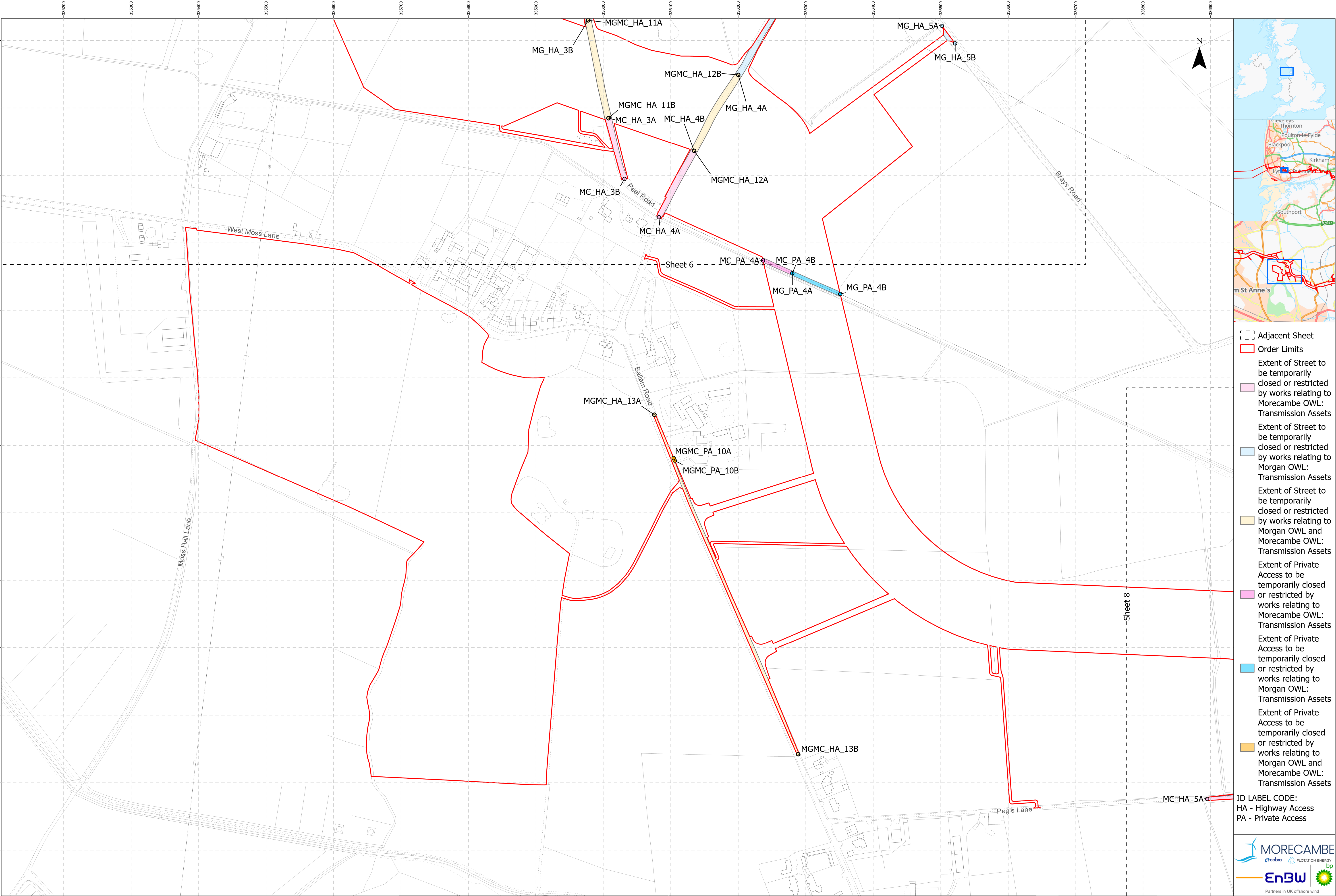
**Data Sources:**BP, Ordnance Survey  
Based Upon The Ordnance Survey Map With The Sanction Of The  
Controller Of HM Stationary Office. Crown Copyright Reserved. © OS  
Licence No. 100042124

**Service Layer Credits:** GB Cartographic Local Names:  
Contains OS data © Crown Copyright and database right  
2023  
Contains data from OS Zoomstack

VER	DATE	DETAILS	AUTH	CHK	APPRV
01	21/09/24	Final at DCO submission	HAH	LM	AS
02	05/08/25	Deadline 4	HAH	PRW	IM

**Drawing Number:**  
BP-GBR-MORG-REG-0179





- [-] Adjacent Sheet
- Order Limits
- Extent of Street to be temporarily closed or restricted by works relating to Morecambe OWL: Transmission Assets
- Extent of Street to be temporarily closed or restricted by works relating to Morgan OWL: Transmission Assets
- Extent of Street to be temporarily closed or restricted by works relating to Morgan OWL and Morecambe OWL: Transmission Assets
- Extent of Private Access to be temporarily closed or restricted by works relating to Morecambe OWL: Transmission Assets
- Extent of Private Access to be temporarily closed or restricted by works relating to Morgan OWL: Transmission Assets
- Extent of Private Access to be temporarily closed or restricted by works relating to Morgan OWL and Morecambe OWL: Transmission Assets
- ID LABEL CODE:  
HA - Highway Access  
PA - Private Access



Project Name: MORGAN AND MORECAMBE OFFSHORE WIND FARMS: TRANSMISSION ASSETS	Drawing Title: Street Works Plan - Sheet 7 of 19 AFPF Reg: 5(2)(k) Document Reference: B12	<div>0255075Meters</div> <div>Scale@A1: 1:2,500</div>	Geodetic Information: Datum: OSGB 1936 Projection: British National Grid	Data Sources:BP, Ordnance Survey  Based Upon The Ordnance Survey Map With The Sanction Of The Controller Of HM Stationery Office. Crown Copyright Reserved. © OS Licence No. 100042124	Service Layer Credits: GB Cartographic Local Names: Contains OS data © Crown Copyright and database right 2023 Contains data from OS Zoomstack	VER	DATE	DETAILS	AUTH	CHK	APPRV	Drawing Number: BP-GBR-MORG-REG-0179
						01	21/09/24	Final at DCO submission	HAH	LM	AS	
						02	05/08/25	Deadline 4	HAH	PRW	IM	





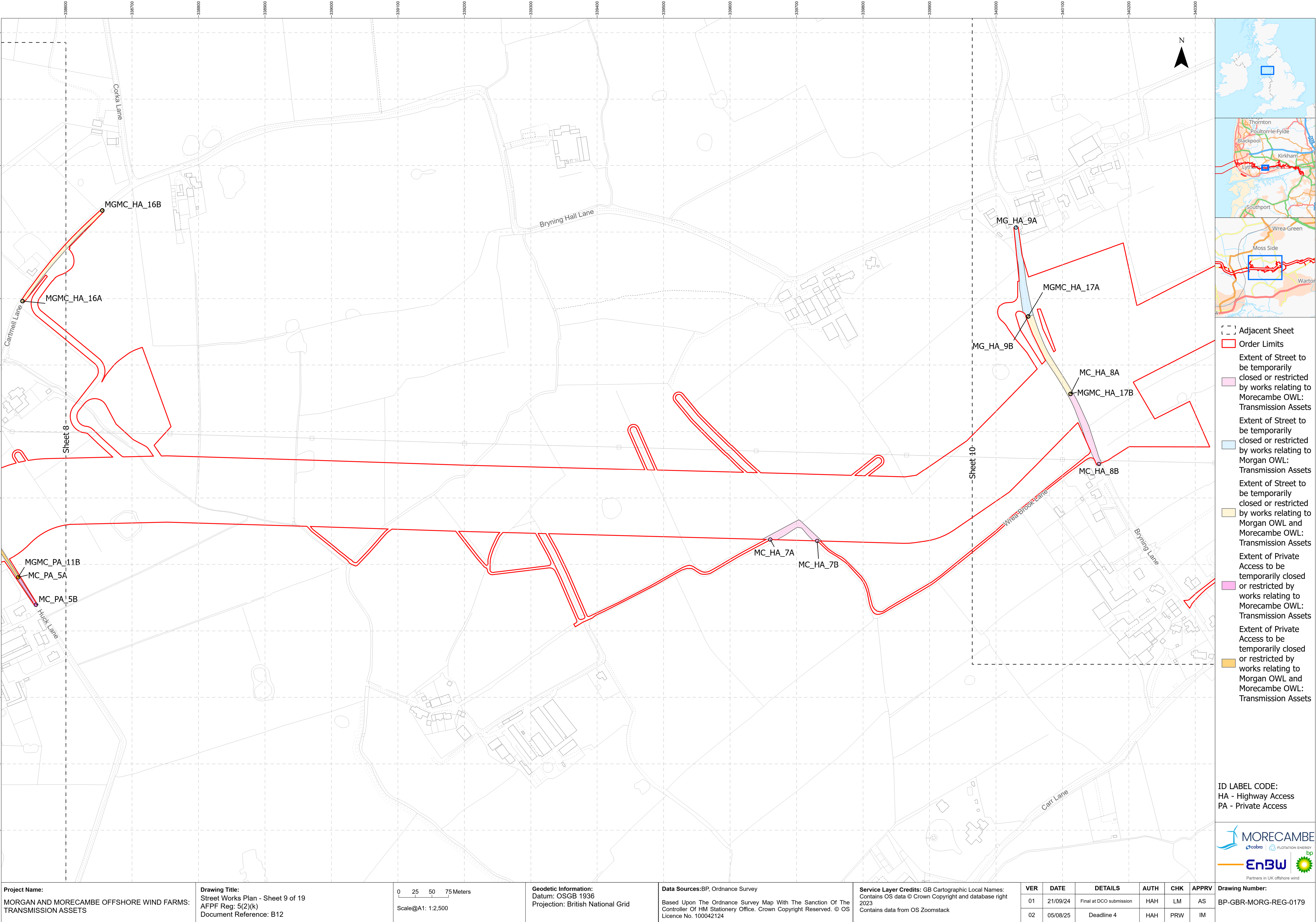
- [ ] Adjacent Sheet
- [ ] Order Limits
- Extent of Street to be temporarily closed or restricted by works relating to Morecambe OWL: Transmission Assets
- Extent of Street to be temporarily closed or restricted by works relating to Morgan OWL: Transmission Assets
- Extent of Street to be temporarily closed or restricted by works relating to Morgan OWL and Morecambe OWL: Transmission Assets
- Extent of Private Access to be temporarily closed or restricted by works relating to Morecambe OWL: Transmission Assets
- Extent of Private Access to be temporarily closed or restricted by works relating to Morgan OWL: Transmission Assets
- Extent of Private Access to be temporarily closed or restricted by works relating to Morgan OWL and Morecambe OWL: Transmission Assets

ID LABEL CODE:  
HA - Highway Access  
PA - Private Access



<div>Project Name:</div> <div>MORGAN AND MORECAMBE OFFSHORE WIND FARMS: TRANSMISSION ASSETS</div>	<div>Drawing Title:</div> <div>Street Works Plan - Sheet 8 of 19</div> <div>AFPF Reg: 5(2)(k)</div> <div>Document Reference: B12</div>	<div><div><div>0</div><div>25</div><div>50</div><div>75</div></div>Meters</div> <div>Scale@A1: 1:2,500</div>	<div>Geodetic Information:</div> <div>Datum: OSGB 1936</div> <div>Projection: British National Grid</div>	<div>Data Sources:BP, Ordnance Survey</div> <div>Based Upon The Ordnance Survey Map With The Sanction Of The Controller Of HM Stationery Office. Crown Copyright Reserved. © OS Licence No. 100042124</div>	<div>Service Layer Credits: GB Cartographic Local Names: Contains OS data © Crown Copyright and database right 2023</div> <div>Contains data from OS Zoomstack</div>	VER	DATE	DETAILS	AUTH	CHK	APPRV	Drawing Number:
						01	21/09/24	Final at DCO submission	HAH	LM	AS	BP-GBR-MORG-REG-0179
						02	05/08/25	Deadline 4	HAH	PRW	IM	





**Project Name:**  
MORGAN AND MORECAMBE OFFSHORE WIND FARMS:  
TRANSMISSION ASSETS

**Drawing Title:**  
Street Works Plan - Sheet 9 of 19  
AFPF Reg: 5(2)(k)  
Document Reference: B12

0 25 50 75 Meters  
Scale@A1: 1:2,500

**Geodetic Information:**  
Datum: OSGB 1936  
Projection: British National Grid

**Data Sources:**BP, Ordnance Survey  
Based Upon The Ordnance Survey Map With The Sanction Of The  
Controller Of HM Stationary Office. Crown Copyright Reserved. © OS  
Licence No. 100042124

**Service Layer Credits:** GB Cartographic Local Names:  
Contains OS data © Crown Copyright and database right  
2023  
Contains data from OS Zoomstack

VER	DATE	DETAILS	AUTH	CHK	APPRV
01	21/09/24	Final at DCO submission	HAH	LM	AS
02	05/08/25	Deadline 4	HAH	PRW	IM

**ID LABEL CODE:**  
HA - Highway Access  
PA - Private Access



**Drawing Number:**  
BP-GBR-MORG-REG-0179







